

RURAL MUNICIPALITY OF BRATT'S LAKE No. 129

WEST OF THE SECOND MERIDIAN

RM of Sherwood No.159

RNG.20

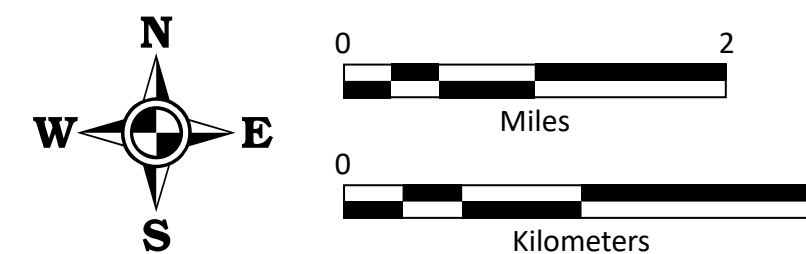
RNG.19

ADMINISTRATOR - PAMELA SCOTT
BOX 130, WILCOX, SK S0G 5E0
PHONE: (306) 732-2030
EMAIL: rm129@sasktel.net

COUNCIL

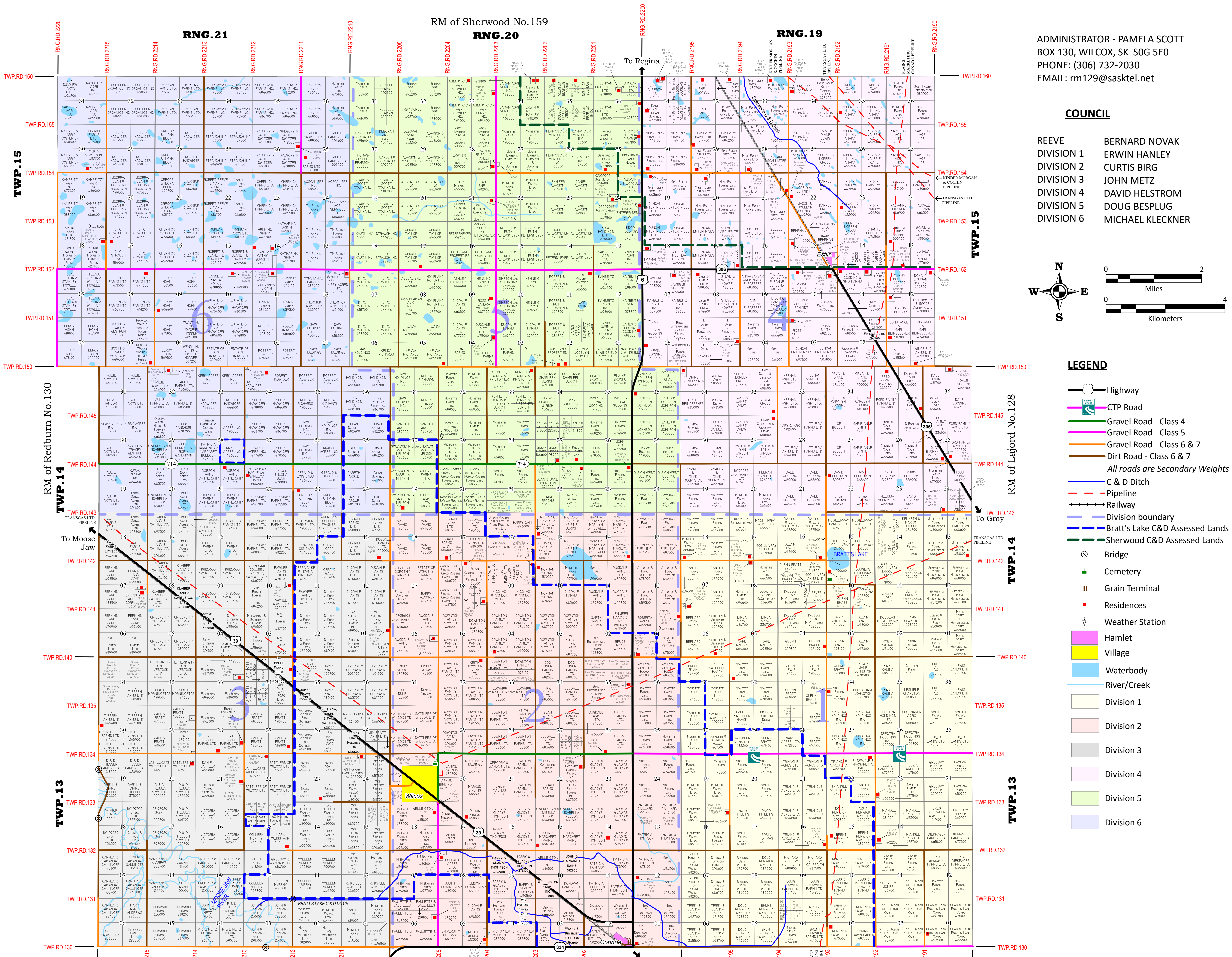
REEVE
DIVISION 1
DIVISION 2
DIVISION 3
DIVISION 4
DIVISION 5
DIVISION 6

BERNARD NOVAK
ERWIN HANLEY
CURTIS BIRG
JOHN METZ
DAVID HELSTROM
DOUG BESPLUG
MICHAEL KLECKNER



LEGEND

- Highway
- CTP Road
- Gravel Road - Class 4
- Gravel Road - Class 5
- Gravel Road - Class 6 & 7
- Dirt Road - Class 6 & 7
- All roads are Secondary Weights
- C & D Ditch
- Pipeline
- Railway
- Division boundary
- Bratt's Lake C&D Assessed Lands
- Sherwood C&D Assessed Lands
- Bridge
- Cemetery
- Grain Terminal
- Residences
- Weather Station
- Hamlet
- Village
- Waterbody
- River/Creek
- Division 1
- Division 2
- Division 3
- Division 4
- Division 5
- Division 6



Note:
This map has been produced by MuniSoft for the R.M. of Bratt's Lake No.129 using information supplied by others. Geospatial data has been provided by Information Services Corporation of Saskatchewan for the production of this map under license to the municipality. Duplication in whole or in part is prohibited. This map is for reference use only. It is the responsibility of the user to verify the accuracy of the information since changes in assessment, ownership and other information may have changed since the time of printing. E&OE.

Updated July 2025



MuniSoft
Municipal Software... and More!

RM of Caledonia No.99

RNG.20

RNG.19